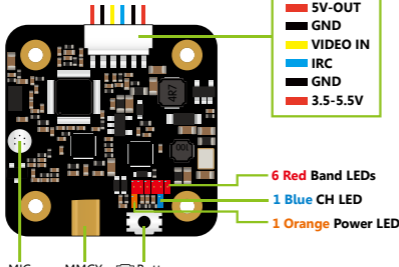


TX500 Manual

## ◆ Instruction diagram



## ◆ Frequency Setup

The factory default setting is in lock mode with red LED blinking and only 25mW is available. You can switch to unlock mode by long pressing the button for 10 seconds with the red LED constantly on.

### Note:

Before you get VTX unlocked, it is highly recommended to know about the rules and regulations in your country about the frequency to avoid a fine or confiscation of your device.

### Button Function Switching

- Short press to CH;
- Long press 2 seconds to BAND;
- Long press 5 seconds to POWER;
- Long press 10 seconds to Unlock/Lock Mode.

## ◆ Parameter

Frequency Channel: 5.8G 48CH  
 Output Power: 25mW/200mW/500mW  
 Working Current: 5V@150~550mA  
 Voltage out: 5V@max 250mA  
 Voltage in: 1S 3.5-5.5V  
 Video Input Impedance: 75 Ohm  
 Audio: Built-in MIC  
 Antenna Connector: MMCX  
 Weight: 4g (without antenna)  
 PCB Size: 28mm\*28mm@20\*20 M2

## ◆ LED Status

### 1 Blue CH LED

CH1 ON, CH2~8 OFF;

### 6 Red Band LEDs

Represents respectively 1~6 Band  
 Red LED **blinks**—Lock Mode  
 Red LED **constantly on**—Unlock Mode

### 1 Orange Power LED

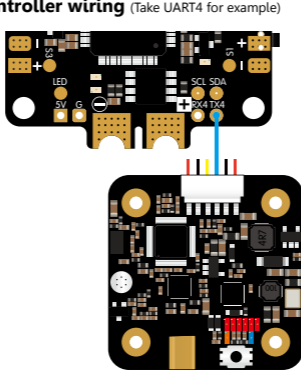
Orange LED **blinks quickly**—PIT Mode  
 Orange LED **off**—25mW  
 Orange LED **blinks slowly**—200mW  
 Orange LED **constantly on**—500mW

## ◆ Frequency Table

200mW 500mW Lock

Channel	CH1	CH2	CH3	CH4	CH5	CH6	CH7	CH8
1 BosCam A	5865	5845	5825	5805	5785	5765	5745	5725
2 BosCam B	5733	5752	5771	5790	5809	5828	5847	5866
3 BosCam E	5705	5685	5665	5645	5885	5905	5925	5945
4 FatShark	5740	5760	5780	5800	5820	5840	5860	5880
5 Race Band	5658	5695	5732	5769	5806	5843	5880	5917
6 Low Race	5362	5399	5436	5473	5510	5547	5584	5621

## 1. Flight controller wiring (Take UART4 for example)



## 2. Betaflight 3.1 or above setting

Identifier	Configuration/MS	Serial Rx	Telemetry Output	Sensor Input	Peripherals
USBVCP	115200	Off	Disabled AUTO	Disabled AUTO	Disabled AUTO
UART1	115200	Off	Disabled AUTO	Disabled AUTO	Disabled AUTO
UART2	115200	On	Disabled AUTO	Disabled AUTO	Disabled AUTO
UART3	115200	Off	Disabled AUTO	Disabled AUTO	Disabled AUTO
UART4	115200	Off	Disabled AUTO	Disabled AUTO	IRC Tramp AUTO
UART5	115200	Off	Disabled AUTO	Disabled AUTO	Disabled AUTO

· If you connect VTX to Flight Controller (BetaFlight 3.3 or above) IRC Tramp protocol, the VTX will be controlled by Flight Controller and its frequency will be changed to F1 5740 and the button on VTX will give no more reaction.

· If you need to get 200/500mW & all 48 channels unlocked, please long press the button on VTX for 10 seconds till the red LED is always on.

## 3. Remote control (Take Mode-2 for example)

### 1 BFCMS-FEATURES-VTX TR



### 2 Change Selection



### 3 Edit Setting Values



BFOSD 25mW	VTX 25mW
BFOSD 100mW	VTX 25mW
BFOSD 200mW	VTX 200mW
BFOSD 400mW	VTX 500mW
BFOSD 600mW	VTX 500mW

